



SCREEN

WIDE WIDTH

## OSLO

ROLLER, ROMAN, VERTICAL AND PANEL BLINDS

A flame retardant and light filtering tonal weave available in 6 colourways.

Oslo is a wide width fabric.

Composition: 100% Polyester

Fabric Width: 3m (118")

Louvre Width: 89mm (3½") or 127mm (5")

Weight: 260g/m² (7.7oz/yd²)

Openess Factor: 3%



## OSLO

SOLAR, OPTICAL AND COLOUR FASTNESS PROPERTIES

	SOLAR			OPTICAL			UV block	SC	CF	DIM out	G VALUE				G TOT
	T <sub>s</sub>	R <sub>s</sub>	A <sub>s</sub>	T <sub>o</sub>	R <sub>o</sub>	A <sub>o</sub>					SG	DG	TG	DG LE	
Birch	20	34	46	17	31	52	100	0.67	6+	2	0.54	0.53	0.44	0.46	0.32
Graphite	4	15	81	3	13	84	100	0.86	6+	3	0.63	0.61	0.49	0.52	0.25
Hazel	12	24	64	8	20	72	100	0.77	6+	3	0.59	0.57	0.47	0.49	0.29
Jasper	3	13	84	2	12	86	100	0.87	6+	3	0.64	0.62	0.50	0.53	0.24
Maple	22	36	42	18	33	49	100	0.65	6+	2	0.53	0.52	0.44	0.46	0.33
Silver	27	39	34	23	36	41	84	0.62	6+	2	0.52	0.51	0.43	0.45	0.35

T: % Transmittance  
R: % Reflectance  
A: % Absorption

UV Block: the % of UV  
light blocked by the fabric  
SC: Shading Co-efficient  
CF: Colour Fastness

Dim out:  
1 = High light penetration  
4 = Low light penetration  
5 = Blackout

G Value: amount  
of heat transmitted  
through the glazing  
SG: Single Glazed

DG: Double Glazed  
TG: Triple Glazed  
DG LE: Double Glazed  
Low Emissivity.

GTOT: The amount of  
heat transmitted through  
the combination of glass  
and solar shading.

### SOLAR GAIN

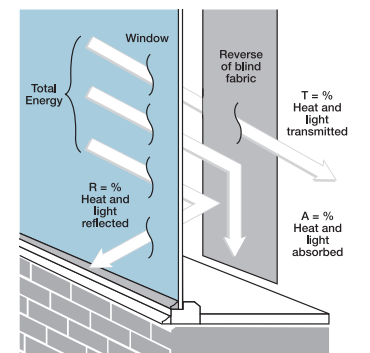
The amount of heat increase resulting from solar energy entering a room. It is the total of three separate parts - the amount of energy transmitted directly into the room, the energy which is absorbed by the blind and the proportion of energy which is absorbed by the window.

### SHADING CO-EFFICIENT

The solar heat gain with the blind at the window divided by the solar heat gain with no blind at the window. The lower the shading co-efficient, therefore, the higher the efficiency of the fabric. The test results in the table above have been achieved using a single 6mm glass glazing system.

### GTOT

When the G-value (a measure of total solar energy that passes through the glazing system and the blind fabric) of the glazing is combined with the value of the shading.



Windowcharm  
Brook Works  
Kent Road  
Sheffield  
S8 9RN

Tel: 0114 2553459  
Email: sales@windowcharm.co.uk



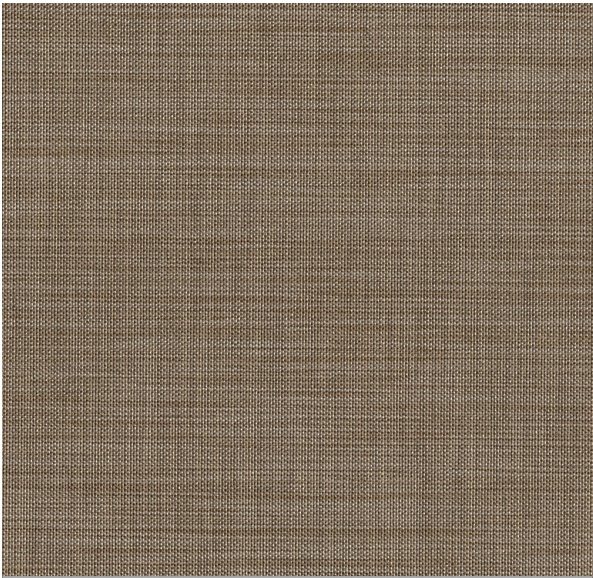
Manufactured  
in the UK

CI/Sfb 1976 reference by Sfb Agency		
(76.7)	X	

S060601-19-0s 11.18



Maple



Birch



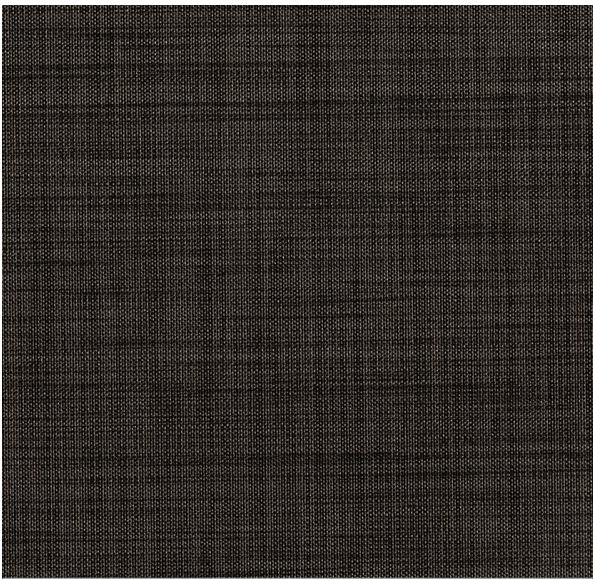
Jasper



Silver



Hazel



Graphite

# OSLO

## Fabric Composition

100% polyester

## Openness

3%

Openness factors are for guidance only. For comprehensive performance data please see Louvolite for solar and optical figures.

## Fabric Width

2.00m (78")

## Vertical Louvre Width

89mm (3½") or 127mm (5")  
Other widths available on request

## Fabric Weight

260g/m² (3.7oz/yd²)

## Flammability Standards

Oslo meets FR standard BS 5867 Part 2 Type B.  
Further information is available on request.

## Colour Fastness

Tested in accordance with BS EN ISO 105-B01:1999

## Cleaning

Oslo fabrics can be wiped clean. See manufacturers instructions. Tested in accordance with BS EN 26330:1994 method 7a.

## Properties

 FR	 Machine wash	 Wipe clean	 84-100%
 Roller	 Roman	 Vertical	 Panel

