



BLACKOUT

WIDE WIDTH

# SUNSET

ROLLER BLINDS

A plain, flame retardant fabric in 10 popular colours.  
Sunset is a 3m wide, blackout fabric that features Greenshield.

Composition: 100% Polyester  
Fabric width: 3.00m (118")  
Weight: 340g/m<sup>2</sup> (10.0oz/yd<sup>2</sup>)



## SUNSET

SOLAR, OPTICAL AND COLOUR FASTNESS PROPERTIES

	SOLAR			OPTICAL			UV block				G VALUE				G TOT
	T <sub>s</sub>	R <sub>s</sub>	A <sub>s</sub>	T <sub>o</sub>	R <sub>o</sub>	A <sub>o</sub>		SC	CF	DIM out	SG	DG	TG	DG LE	
Charcoal	0	77	23	0	89	11	100	0.26	6+	5	0.26	0.30	0.31	0.32	0.26
Cream	0	77	23	0	89	11	100	0.26	6+	5	0.26	0.30	0.31	0.32	0.26
Dove	0	77	23	0	89	11	100	0.26	6+	5	0.26	0.30	0.31	0.32	0.26
Flint	0	77	23	0	89	11	100	0.26	6+	5	0.26	0.30	0.31	0.32	0.26
Jet	0	77	23	0	89	11	100	0.26	6+	5	0.26	0.30	0.31	0.32	0.26
Mink	0	77	23	0	89	11	100	0.26	6+	5	0.26	0.30	0.31	0.32	0.26
Mocha	0	77	23	0	89	11	100	0.26	6+	5	0.26	0.30	0.31	0.32	0.26
Pebble	0	77	23	0	89	11	100	0.26	6+	5	0.26	0.30	0.31	0.32	0.26
Stone	0	77	23	0	89	11	100	0.26	6+	5	0.26	0.30	0.31	0.32	0.26
White	0	77	23	0	89	11	100	0.26	6+	5	0.26	0.30	0.31	0.32	0.26

T: % Transmittance  
R: % Reflectance  
A: % Absorption

UV Block: the % of UV light blocked by the fabric  
SC: Shading Co-efficient  
CF: Colour Fastness

Dim out:  
1 = High light penetration  
4 = Low light penetration  
5 = Blackout

G Value: amount of heat transmitted through the glazing  
SG: Single Glazed

DG: Double Glazed  
TG: Triple Glazed  
DG LE: Double Glazed Low Emissivity.

GTOT: The amount of heat transmitted through the combination of glass and solar shading.

## SOLAR GAIN

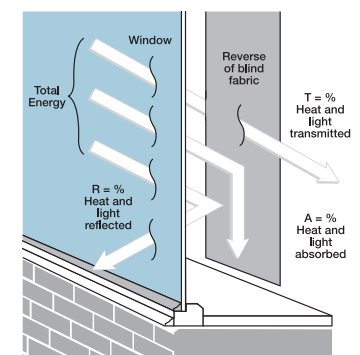
The amount of heat increase resulting from solar energy entering a room. It is the total of three separate parts - the amount of energy transmitted directly into the room, the energy which is absorbed by the blind and the proportion of energy which is absorbed by the window.

## SHADING CO-EFFICIENT

The solar heat gain with the blind at the window divided by the solar heat gain with no blind at the window. The lower the shading co-efficient, therefore, the higher the efficiency of the fabric. The test results in the table above have been achieved using a single 6mm glass glazing system.

## GTOT

When the G-value (a measure of total solar energy that passes through the glazing system and the blind fabric) of the glazing is combined with the value of the shading.



Windowcharm  
Brook Works  
Kent Road  
Sheffield  
S8 9RN

Tel: 0114 2553459  
Email: sales@windowcharm.co.uk

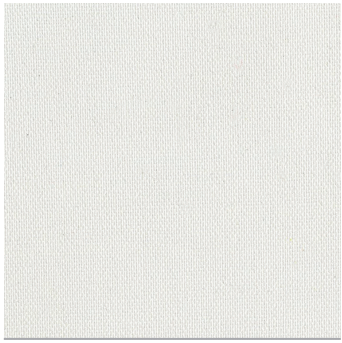


Manufactured in the UK

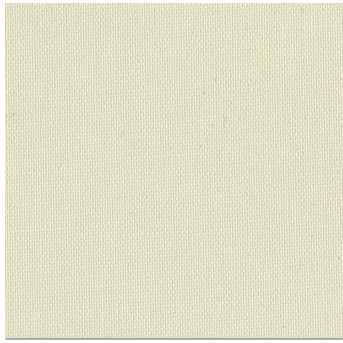
CI/SfB 1976 reference by SfB Agency

(76.7) X

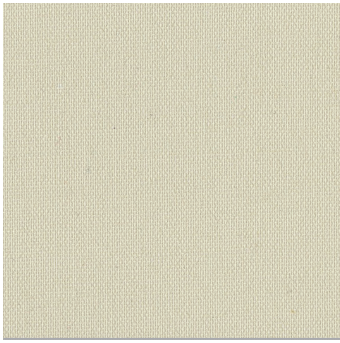




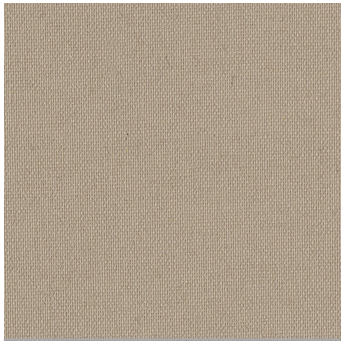
White



Cream



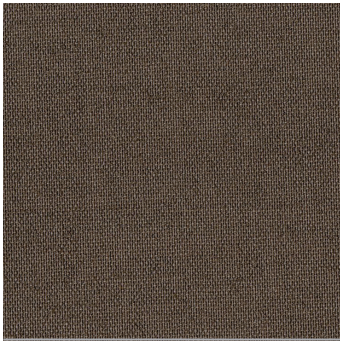
Stone



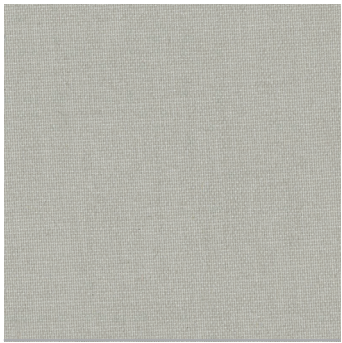
Pebble



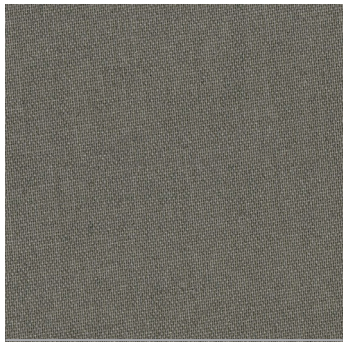
Mink



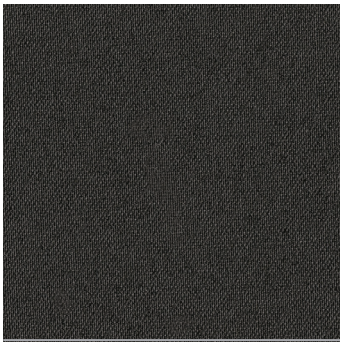
Mocha



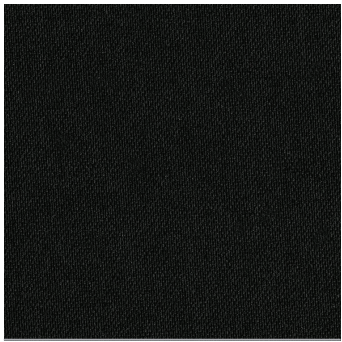
Dove



Flint



Charcoal



Jet

# SUNSET

### Fabric Composition

100% polyester

### Fabric Width

3.00m (118")

### Fabric Weight

340g/m<sup>2</sup> (10.3oz/yd<sup>2</sup>)

### Flammability Standards

Sunset meets FR standard BS 5867 Part 2 Type B. Further information is available on request.

### Colour Fastness

Tested in accordance with BS EN ISO 105-B01:1999

### Cleaning

Sunset fabrics can be wiped clean. See manufacturers instructions. Tested in accordance with BS EN 26330:1994 method 7a.

### Greenshield

Fabrics featuring Greenshield have been tested to confirm no harmful VOC's or hazardous substances will be released into the environment in quantities that are recognised as potentially dangerous to occupants of dwellings or buildings.

### Properties



FR



Wipe clean



100%



Roller



Blackout

