

# Roach fabric

Roach fabric is designed for areas where a high level of light exclusion is required along with exceptional performance characteristics. The unique fabric weave with a white PVC reflective coating on the reverse ensures total light exclusion whilst maintaining a superior fabric weave appearance. With three colours along with one of the most advanced production procedures, the flame retardant fabric is designed with commercial, educational and healthcare environments in mind.

- Fabric Composition:

70% PVC, 30% Polyester
- Fabric Range:

3
- Roller Fabric Width:

2500mm (98.4")
- Fabric Thickness:

0.60mm
- Fabric Weight:

560 g/m²
- Fire Retardancy:

Conforms to BS5867, Part 2: Type B 2008
- Shading:

Blackout. Suitable for computer environments
- Moisture Resistance:

Suitable for moist conditions
- Care Instructions:

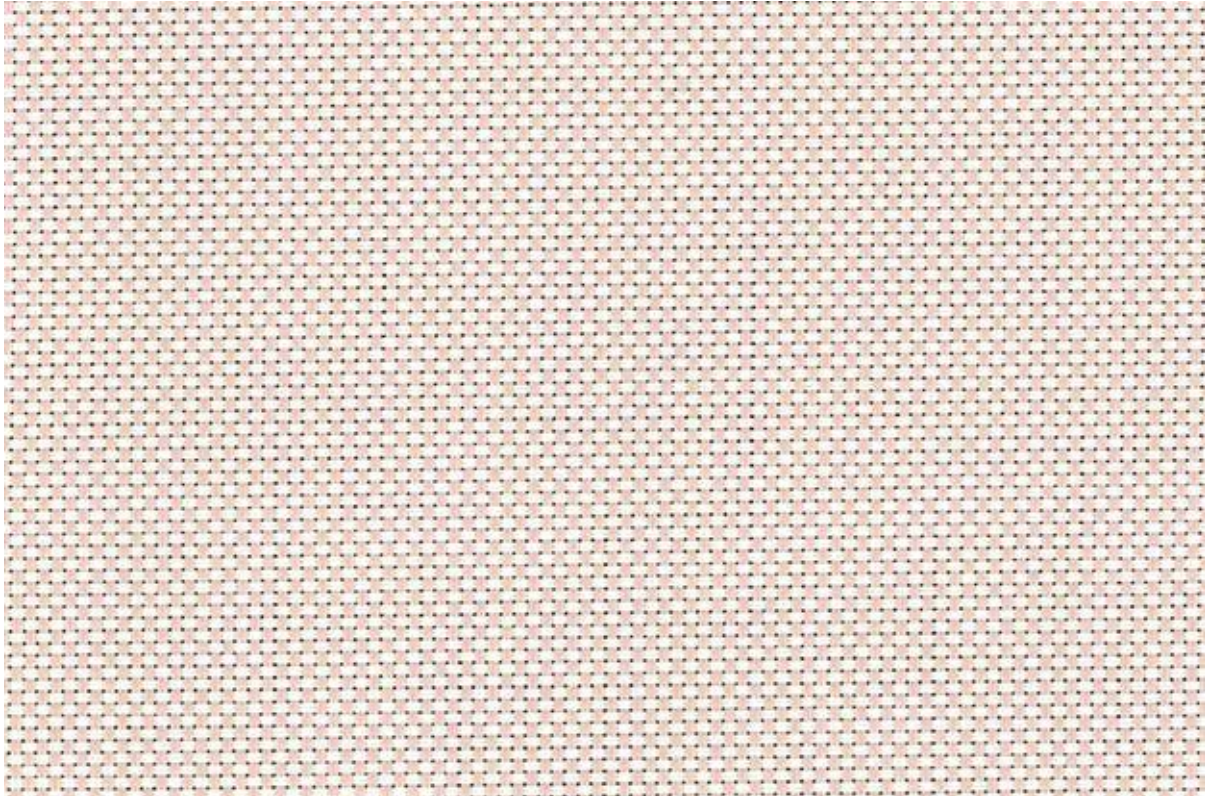
Wipe clean
- Mesh/in:

48 x 48

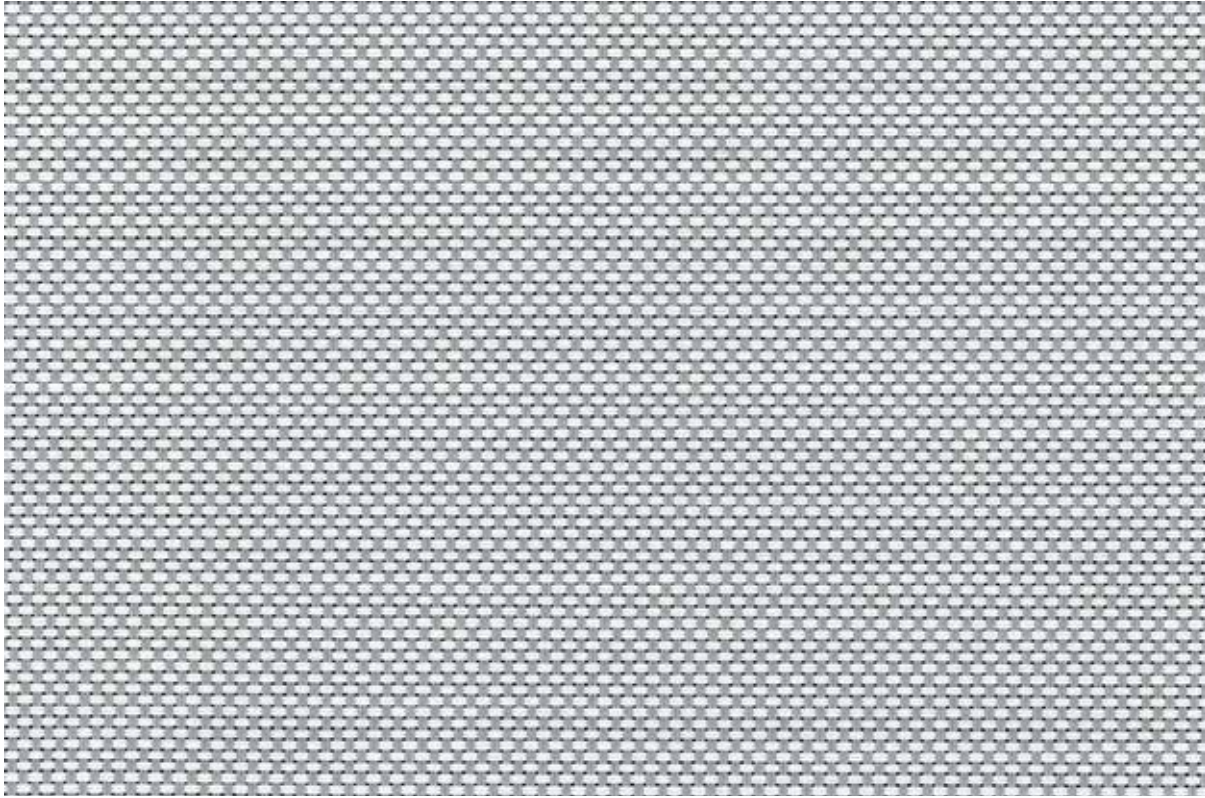
White



Magnolia

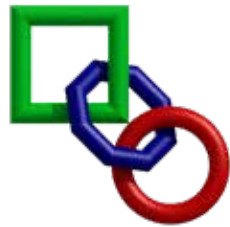


Light Grey



this fabric range comes with a full **LIFETIME Warranty** as standard.

CI/SfB 1976 reference by SfB Agency			
	(76.7)	X	



Our range of fabrics are a diverse and comprehensive collection suited to nearly every application. From offices to homes, hospitals to schools, this fabric range is ideal for any project.

roach  
fabric selector



## Roach fabric

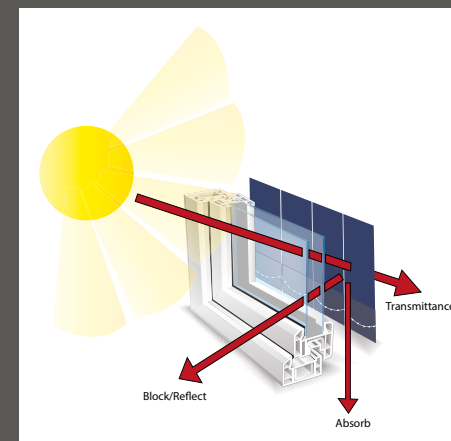
### shading efficiency

**Transmittance** is the amount of light and heat transmitted beyond the fabric. The lower the amount, the greater the efficiency.

**Block/reflect** is the amount of heat and light that is blocked or reflected. The higher the amount, the greater the efficiency.

**Absorption** is the amount of heat and light absorbed in the fabric. The higher the amount, the lower the efficiency.

**Ultraviolet** protection illustrates how protective the fabric is against ultraviolet rays. The higher the amount, the greater the effectiveness.



	2500mm	Heat Transmittance %	Light Transmittance %	Sunblock %	Ultraviolet Protection %	Absorption %	Heat Reflection %
White		0	0	100	100	30	70
Magnolia		0	0	100	100	29	71
Light Grey		0	0	100	100	30	70

Please enquire about other fabrics that we have available